



Hematoxylin Stains

In histopathological and cytological laboratories, multiple stains and techniques are often used for clinical diagnosis. Of these stains, **Hematoxylin-Eosin (HE)** is the most routinely used. The reason is the great capacity of this technique to obtain chromatic variants combined with the excellent definition of the nuclei propitiated by hematoxylin. There are many varieties of hematoxylin stains, the best known being **Harris, Carazzi, Mayer and Weigert**.

Hematoxylin has to be oxidized to hematin combined with a metallic ion, usually aluminum so that they can dye.

Hematoxylin is classified as progressive and regressive. Progressive hematoxylin usually has a lower concentration and stains chromatin. Their intensity depends on the time of exposure to the stain. Regressive stains dye nuclear and cytoplasmic structures and excess staining must be removed in a washing process.

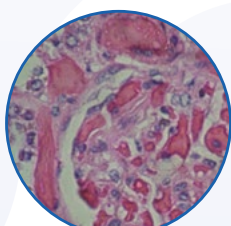


Main advantages

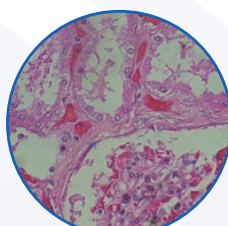
- Solutions ready to use
- Better contrast and greater number of samples
- CE-IVD mark

PanReac AppliChem Hematoxylin guide

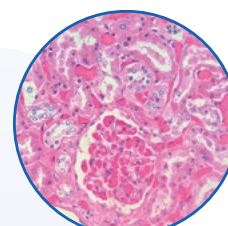
Name	Type of Stain	Hematoxylin content	Colors	Notes	Application
Harris	Regressive	500 mg H / 100 ml Contains mercury	Nuclei: intense blue Cytoplasm and matrix: different shades of pink to violet	The most frequently used hematoxylin for routine HE staining	HE stains Cytology and Histology
Harris modified	Regressive	500 mg H / 100 ml Mercury free	Nuclei: blue Cytoplasm and matrix: different shades of red and pink	Environmentally friendly and safe	HE stains Cytology and Histology
Carazzi's	Progressive	100 mg H / 100 ml	Nuclei: light blue-violet Cytoplasm and matrix: different shades of pink	Pale and precise nuclear staining	HE stains Cytology and Histology
Mayer's	Progressive	100 mg H / 100 ml	Nuclei: dark blue to purple Cytoplasm and matrix: pink to red	Specific for counter-staining in cytochemistry. Alternative to Gill's Hematoxylin	HE stains Cytology PAS stain
Weigert's A+B	Regressive	500 mg / 100 ml	Nuclei: dark blue to black	Specific for nuclear staining in connective tissue stains	Masson's staining



Harris



Carazzi

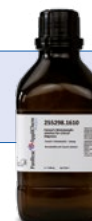


Mayer



Hematoxylin

Product code	Product name	Pack size
255298.1610	Carazzi's Hematoxylin solution for clinical diagnosis CE	500 mL
255298.1212		2.5 L
256991.1610	Harris Hematoxylin modified solution for clinical diagnosis CE	500 mL
256991.1212		2.5 L
253949.1610	Harris Hematoxylin solution for clinical diagnosis CE	500 mL
253949.1211		1 L
253949.1212		2.5 L
251344.1606	Hematoxylin 1-hydrate (C.I. 75290) for clinical diagnosis CE	25 g
254766.1610	Mayer's Hematoxylin solution for clinical diagnosis CE	500 mL
254766.1211		1 L
253453.1210	Weigert's Hematoxylin solution A for clinical diagnosis	500 mL
253454.1210	Weigert's Hematoxylin solution B for clinical diagnosis	500 mL



Other related stains

Product code	Product name	Pack size
253999.1210	Eosin for fast staining (Panoptic No. 2) for clinical diagnosis CE	500 mL
253999.1212		2.5 L
251299.1606	Eosin Yellowish (C.I. 45380) for clinical diagnosis CE	25 g
256879.1210	Eosin Yellowish alcoholic solution 1% for clinical diagnosis CE	500 mL
256879.1212		2.5 L
251301.1609	Eosin Yellowish hydroalcoholic solution 1% for clinical diagnosis CE	250 mL
251301.1211		1 L
256692.0922	Masson's Trichrome Kit for clinical diagnosis CE	Kit
253594.1211	Papanicolaou's Solution EA 50 for clinical diagnosis CE	1 L
253594.1212		2.5 L
253892.1211	Papanicolaou's Solution OG 6 for clinical diagnosis CE	1 L
253892.1212		2.5 L



IP-056EN

