

Protein Marker VI (10 – 245) prestained

Protein Ladder, Protein Gel Electrophoresis Size Marker, Blue-Green-Red Protein Marker

Product code A8889

Description

Protein Marker VI prestained is a three-color protein standard with 12 prestained proteins covering a wide molecular weight range from approx. 10 to 245 kDa. Proteins are covalently coupled with either a blue chromophore or one green (25 kDa) and one red dye (75 kDa), respectively. Gel run may be monitored during protein separation on SDS-PAGE (Tris-glycine buffer, "Laemmli system").

Supplied in gel loading buffer ready-to-use.

Applications:

- Monitoring of protein migration during SDS-polyacrylamide gel electrophoresis
- Verification of Western transfer efficiency on membranes (PVDF, nylon, or nitrocellulose)
- Sizing of proteins on SDS-polyacrylamide gels and Western blots

Protein size range: 10 - 245 kDa

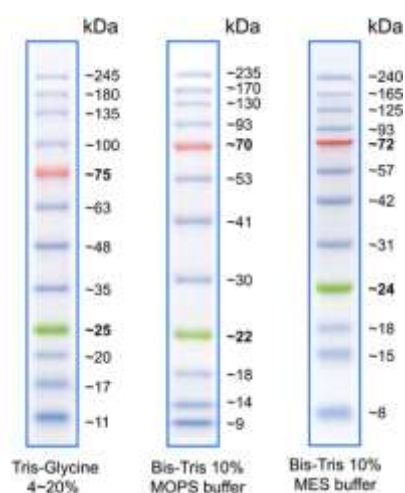
Number of Bands: 12

Two reference proteins coupled with a green (approx. 25 kDa band) and a red dye (approx. 75 kDa band), respectively, for easy identification.

Contents: Approximately 0.1 - 0.4 mg/ml of each protein in the buffer (20 mM Tris-phosphate, pH 7.5 at 25°C), 2 % SDS, 1 mM 2-Mercaptoethanol, 3.6 M Urea, and 15 % (v/v) Glycerol).

Quality control: Tested in SDS-polyacrylamide gel electrophoresis and Western blotting

Shelf life: 2-8°C for 3 months, -20°C for 24 months



Apparent molecular masses of *Protein Marker VI* on SDS-PAGE at various acrylamide concentrations and different buffer conditions.

Note. The apparent molecular weight of each protein (kDa) has been determined by calibration against an unstained protein ladder under each electrophoresis condition.

Recommendations for Loading

- 3 μ l or 5 μ l per well for clear visualization during electrophoresis on 15-well or 10-well mini-gel, respectively
- 1.5 - 2.5 μ l per well for general Western transfer
- Apply more for thicker (> 1.5 mm) or larger gel