

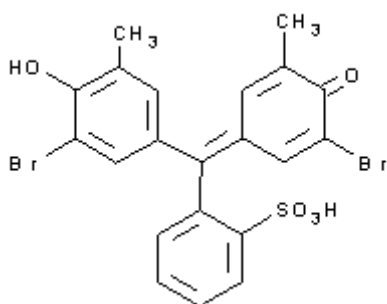


PRODUCT CODE: 121546

Bromocresol Purple (Reag. USP) for analysis
pH indicator 5,2 greenish yellow; 6,8 bluish purple

$C_{21}H_{16}Br_2O_5S$

$C_{21}H_{16}Br_2O_5S$



M.= 540,24

CAS [115-40-2]

EINECS 204-087-8

TARIC 2934 99 90 90

SYNONYMS: 5',5''-Dibromo-o-Cresolsulphonephthalein

PHYSICAL DATA: powder, Purple, Soluble in water 20 g/l at 20 °C Soluble in alcohol 80 g/l M.P.: 240 °C • pKa6,3 •

BIBLIOGRAPHY: Merck Index **12**, 1.408 13, 1.371 Conn's **IX** 322 • Beilstein **19** , **91V** , **3/460** • BRN 359618 •

HAZARDOUS:

OBSERVATIONS: Storage between +2 and +8°C . •

SPECIFICATIONS:

Identity :
Identity

IR passes test

A 1% , 1 cm, λ_1 max.(calc. a.d.s.)	>400
A 1% , 1 cm, λ_2 max.(calc. a.d.s.)	>950
λ_1 of max. ABS at pH 5.2	427 - 433 nm
λ_2 of max. ABS at pH 6.8	588 - 590 nm
T.L.C.	passes test

Maximum limit of impurities

pH transition interval:	
greenish yellow	5,2
bluish purple	6,8
Insoluble matter in C ₂ H ₅ OH	passes test
Loss on drying at 110°C	1%
Residue on ignition (as SO ₄)	0,5 %