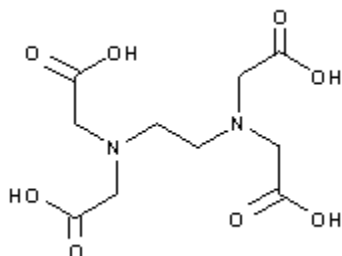


PRODUCT CODE: 131026

EDTA (Reag. USP) for analysis, ACS

$C_{10}H_{16}N_2O_8$



M.= 292,24

CAS [60-00-4]

EINECS 200-449-4

TARIC 2922 49 85 90

SYNONYMS: Edetic Acid, EDTA, Ethylenedinitriletetraacetic Acid, N,N'-1,2-Ethanediy-bis[N-(Carboxymethyl) Glycine], Titriplex II

PHYSICAL DATA: crystalline powder, White, Soluble in water 0,5 g/l at 25 °C M.P.: 220 °C • pH(10 g/l sol.)2,8 •

BIBLIOGRAPHY: Merck Index **12**, 3.559 13, 3.546 Sax **EIX000** • Safety **2** , **1605 D** • Beilstein **4** , **III** , **1187 IV** , **2449** • BRN 1716295 • Fieser 1373 • ACS **XI** • BP.**2021** • USP **-NF 37** • Ph. Eur. **9.0** (2017) 5.4 , 3933 **10.0** (2020) 5.4 , 3933 •

HAZARDOUS: RTECS: AH 4025000 • TDL0 oral rat 7.632 mg/kg • LD50 oral rat 4.500 mg/kg • LD50 ipr mus 250 mg/kg



H: H319 • H332 • H373 •

P: P264 • P280 • P305+P351+P338 • P337+P313 •

OBSERVATIONS: Storage away from direct light. •

SPECIFICATIONS:

Assay (Compl.)	99,4-100,6%
Identity :	
Identity	IR passes test

Maximum limit of impurities

Insoluble matter in NH ₄ OH	0,005 %
Residue on ignition (as SO ₄)	0,1 %
Chloride (Cl)	0,005%
Nitrilotriacetic Acid [(CH ₂ COOH) ₃ N]	0,1%
Heavy metals (as Pb)	0,001%

Ca	0,001	%
Cu	0,001	%
Fe	0,001	%
Mg	0,0005	%
Ni	0,001	%
Pb	0,001	%