



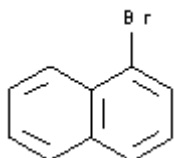
**PRODUCT CODE: 15A603**

**1-Bromonaphthalene, 96% for synthesis**

---

C<sub>10</sub>H<sub>7</sub>Br

C<sub>10</sub>H<sub>7</sub>Br



M.= 207,08

CAS [90-11-9]

EINECS 201-965-2

TARIC 2903 99 80 90

**SYNONYMS:** 1-Naphthyl Bromide, a-Bromonaphthalene

**PHYSICAL DATA:** liquid, Clear, colorless to slightly yellowish, Immiscible with water. • D 20/4 1,4826 • M.P.: 1 °C  
• B.P.: 281 °C • n<sub>20/D</sub> : 1,6576 • Flash P.:66 °C •

**BIBLIOGRAPHY:**

**HAZARDOUS:** LD50 ipr mus 810 mg/kg

**WEIGHT/VOLUME INFORMATION:** 1l~1,485 kg 1kg~0,673 l

**SPECIFICATIONS:**

Minimum assay (G.C.)

96%

Identity :

Identity

IR passes test

Density at 20/4

1,483-1,486

Ed.: 1 . Vig.: 15.01.2011 .

Prod.: 15A603