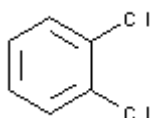
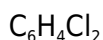
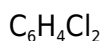




PRODUCT CODE: 161892

1,2-Dichlorobenzene, 98% for synthesis



M.= 147,00

CAS [95-50-1]

EINECS 202-425-9

TARIC 2903 91 00 00

SYNONYMS: o-Dichlorobenzene

PHYSICAL DATA: liquid, Clear, Colourless, Inmiscible with water. • D 20/4 1,307 • M.P.: -17 °C • B.P.: 180 °C • n_{20/D} : 1,5515 • Flash P.:66 °C • Ign. T.:640 °C • Vap. press. (20 °C) 1,33 hPa • Viscosity 20 °C 1,32 mPa.s • D. M. 24 °C 2,27 Debye • Dielec. constant 25 °C 9,9 • Evap. number (DIN 53170) 57 • Heat evap. 180 °C 272 KJ/Kg • Satur. conc. 20 °C 8 g/m³ • Expl. limit 1,2 %(V) 12 %(V) •

BIBLIOGRAPHY: Merck Index **12**, 3.106 13, 3.081 Sax **DEP600** • Safety **2** , **1115 C** • Kühn-Birett **D 22** • Ullmann **(5.)**6 , 331 • Beilstein **5** , **201 I** , **111 II** , **153 III** , **537 IV** , **654** • BRN 606078 •

HAZARDOUS: C.E: 602-034-00-7 • RTECS: CZ 4500000 • LD L0 oral gpg 2.000 mg/kg • LD50 oral rat 500 mg/kg • LC L0 inh rat 821 ppm / 7h • LD50 ipr mus 1.228 mg/kg VLA-EC 50 ppm 306 mg/m³ VLA-ED 20 ppm 122 mg/m³



H: H302 • H319 • H335 • H315 • H410 •

P: P261 • P264 • P270 • P271 • P273 • P501 • P280 • P301+P312 • P302+P352 • P304+P340 • P305+P351+P338 • P312 • P321 • P330 • P332+P313 • P337+P313 • P362 • P391 • P403+P233 • P405 •

TRANSPORT REGULATIONS: UN: 1591 • ADR: 6.1/III • IMDG: 6.1/III • IATA: 6.1/III • PAX: 655 • CAO: 663 • (E) •

WEIGHT/VOLUME INFORMATION: 1l~1,307 kg 1kg~0,765 l

SPECIFICATIONS:

Minimum assay (G.C.)	98%
Identity :	
Identity	IR passes test
Density at 20/4	1,305-1,308
Water (H ₂ O)	0,05 %

Ed.: 3 . Vig.: 15.01.2011 .

Prod.: 161892