

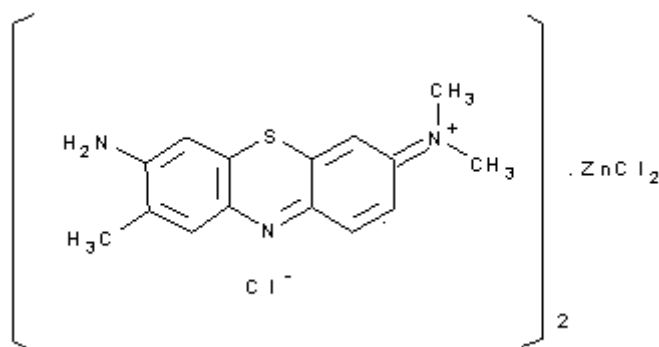


PRODUCT CODE: 251176

Toluidine Blue O (C.I. 52040) for clinical diagnosis
for microscopy, nucleus and mucosae staining

$(C_{15}H_{16}ClN_3S)_2 \cdot ZnCl_2$

$(C_{15}H_{16}ClN_3S)_2 \cdot ZnCl_2$



M.= 747,96

CAS [6586-04-5]

EINECS 202-146-2

TARIC 3204 16 00 90

Zinc double salt .

SYNONYMS: Basic Blue 17, Dimethyltoluthionone Chloride, Tolonium Chloride

PHYSICAL DATA: powder, Dark green, Soluble in water 38,2 g/l at 25 °C Soluble in ethanol 5,7 g/l

BIBLIOGRAPHY: Merck Index **12**, 9.658 13, 9.598 Conn's **IX** 428, 607 • Beilstein **27**, **402 IV**, **5161** •

HAZARDOUS: RTECS: SP 5670000 •

SPECIFICATIONS:

Identity :

Identity
Ratio I_{max}. P +/-15 nm
A 1% , 1 cm, λ_{max}.

IR passes test
1,00 - 1,23
>750

λ_{of max}. ABS in H₂O

630 - 635 nm

T.L.C.

passes test

Maximum limit of impurities

Loss on drying at 135°C

10%

Ed.: 1 . Vig.: 15.01.2011 .

Prod.: 251176