

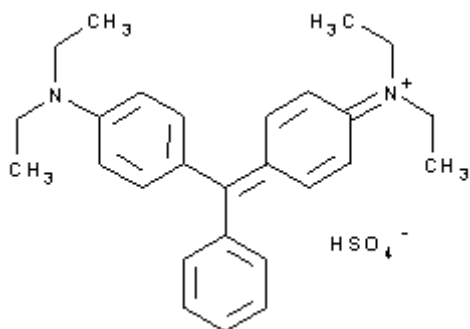


PRODUCT CODE: 251758

Brilliant Green (C.I. 42040) for clinical diagnosis
for microscopy, vegetal tissue staining

$C_{27}H_{34}N_2O_4S$

$C_{27}H_{34}N_2O_4S$



M.= 482,64

CAS [633-03-4]

EINECS 211-190-1

TARIC 3204 13 00 90

SYNONYMS: Basic Green 1, Emerald Green, Malachite Green G,N-[4-[[4-(Diethylamino)Phenyl]Phenylmethylene]-2,5-Cyclohexadiene-1-Ylidene]-N-Ethyl

PHYSICAL DATA: crystalline powder, crystals, Green, Soluble in water 40 g/l at 20 °C Soluble in alcohol 50 g/l M.P.: 210 °C • pH2,5 •

BIBLIOGRAPHY: Merck Index **12**, 1.398 Safety **2** , **489 C** • Conn's **IX** 251, 580 • Beilstein **13** , **746 IV** , **2281** • BRN 3901207 •

HAZARDOUS: RTECS: BP 6825000 • LD L0 oral rat 1 mg/kg • LD L0 ipr rat 8 mg/kg



H: H302 • H319 • H315 •

P: P264 • P270 • P280 • P301+P312 • P302+P352 • P501 • P305+P351+P338 • P321 • P330 • P332+P313 • P337+P313 • P362 •

SPECIFICATIONS:

Identity :	
Identity	IR passes test
Ratio I _{max} . P +/-15 nm	0,94 - 1,14
A 1% , 1 cm, λ _{max} .	>1750
λ _{of max} . ABS in C ₂ H ₅ OH 50%	628 - 632 nm
T.L.C.	passes test
Maximum limit of impurities	
Loss on drying at 135°C	5%

Ed.: 1 . Vig.: 15.01.2011 .

Prod.: 251758