



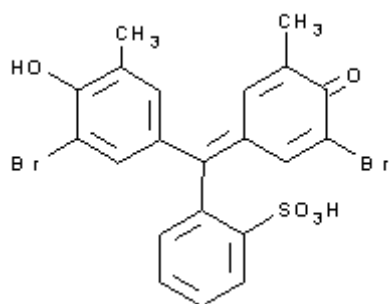
**PRODUCT CODE: 282861**

**Bromocresol Purple solution 0.025% for volumetric analysis**  
pH indicator 5,2 greenish yellow; 6,8 bluish purple

---

$C_{21}H_{16}Br_2O_5S$

$C_{21}H_{16}Br_2O_5S$



M.= 540,24

CAS [115-40-2]

EINECS 204-087-8

TARIC 2934 99 90 90

**SYNONYMS:** 5',5''-Dibromo-o-Cresolsulphonephthalein

**PHYSICAL DATA:** liquid, Purple, Miscible with water D 1,000 •

**BIBLIOGRAPHY:** Merck Index **12**, 1.408

**HAZARDOUS:**

**WEIGHT/VOLUME INFORMATION:** 1l~1,000 kg    1kg~1,000 l

**SPECIFICATIONS:**

pH transition interval:  
greenish yellow  
bluish purple

5,2  
6,8

Ed.: 1 . Vig.: 15.01.2011 .

Prod.: 282861