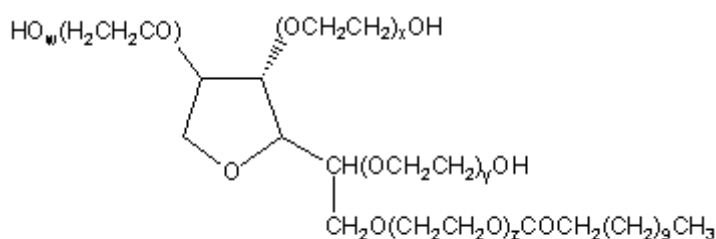




PRODUCT CODE: Z42312

Tween® 20 (RFE, USP-NF, BP, Ph. Eur.) pure, pharma grade
(® Registered trade-mark of ICI)



$$w + x + y + z = 20$$

CAS [9005-64-5]

EINECS 500-018-3

TARIC 3402 13 00 90

SYNONYMS: Polyoxyethylene 20 Sorbitane mono-Laurate, Polysorbate 20

PHYSICAL DATA: liquid, Clear, Yellow to brownish, Soluble in water 100 g/l at 25 °C D 20/4 1,1 • B.P.:> 100 °C

• pH(50g/l) 6 - 8 • n_{20/D} : 1,4735 • Flash P.:>150 °C • Viscosity 250 mPa.s •

BIBLIOGRAPHY: Merck Index **13**, 7.664 Sax **PKL000** • **BP.2018** • **USP 41** • Ph. Eur. **8.0** (2014) **9.0** (2017) 6.3

• F.C.C **IV306** • **BOE 243**(8-10-2009) • Regulation (EU) n° 231/2012 •

HAZARDOUS: RTECS: TR 7400000 • LD50 oral mus 37.000 mg/kg • LD50 oral rat 37.000 mg/kg •

WEIGHT/VOLUME INFORMATION: 1l~1,105 kg 1kg~0,905 l

OBSERVATIONS: Storage away from direct light. •

SPECIFICATIONS:

Identity :

Identity according to Pharmacopoeias: passes test

Maximum limit of impurities

Residue on ignition (as SO₄) 0,2 %
Acidity value 2,0
Hydroxyl value 96-108
Iodine value 5
Peroxide value 10,0
Saponification value 40-50
Composition of fatty acids passes test
Total ashes 0,25%
Residual solvents (Ph.Eur/USP) passes test
Ethylene Oxide 0,0001%
Dioxan 0,001%
Reducing impurities passes test
Water (H₂O) 3,0 %
Heavy metals (as Pb) 0,001%

As 0,0001 %

Elemental impurities (ICH Q3D):

Class 1

Cd 0,5 ppm
Pb 0,5 ppm
As 1 ppm
Hg 1,5 ppm

Class 2A

Co 5 ppm
V 10 ppm
Ni 20 ppm

Class 2B

Tl 5 ppm
Au 10 ppm
Pd 10 ppm
Ir 10 ppm
Os 10 ppm
Rh 10 ppm
Ru 10 ppm
Se 15 ppm
Ag 15 ppm
Pt 10 ppm

Class 3

Li 55 ppm
Sb 120 ppm
Ba 140 ppm
Mo 25 ppm
Cu 250 ppm
Sn 600 ppm
Cr 25 ppm

VEGETABLE ORIGIN.

Ed.: 2 . Vig.: 13.04.2018 .

Prod.: Z42312